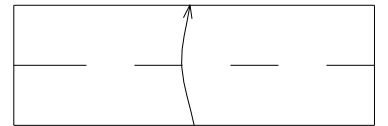
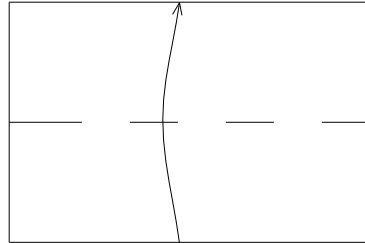
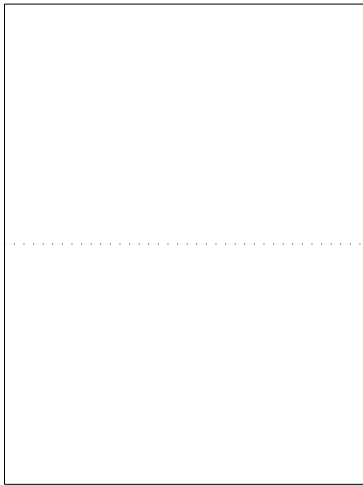
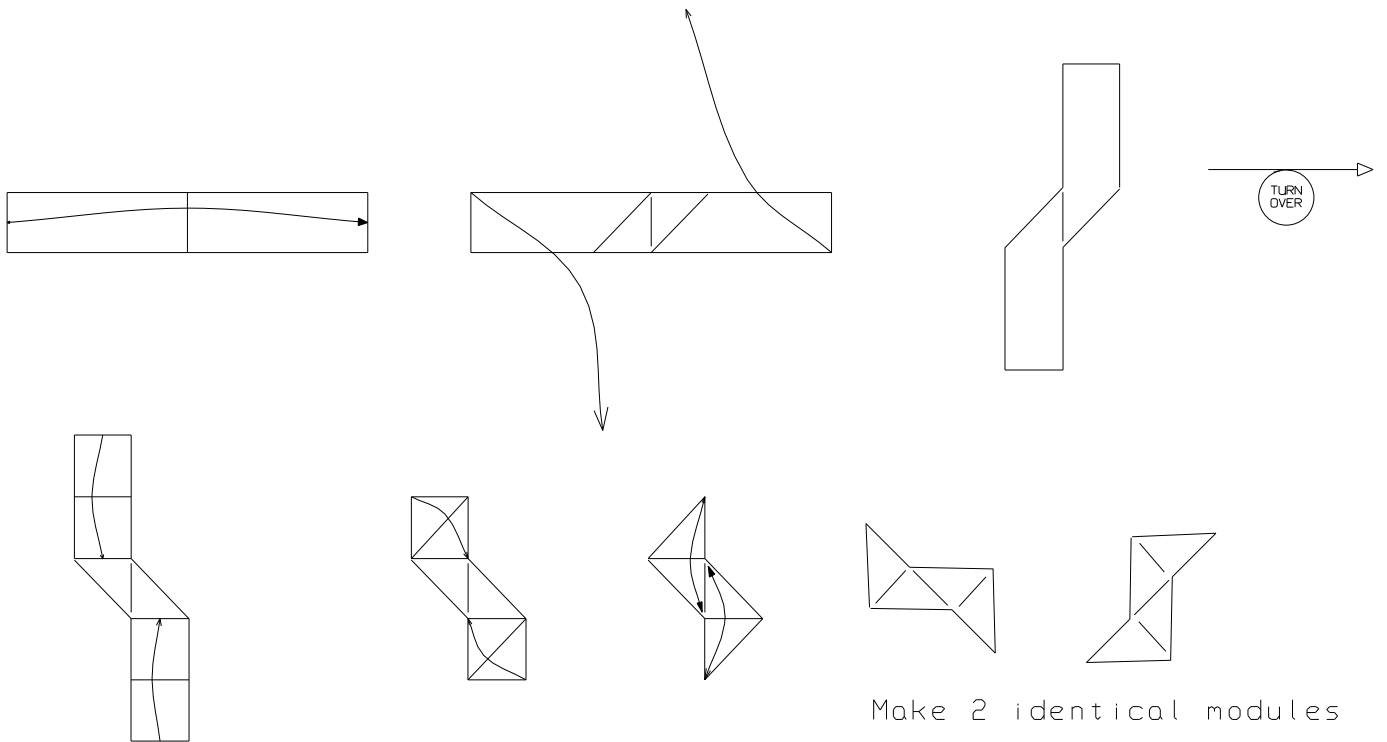


Throwing Star (traditional?)

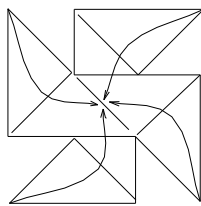
Diagrammed by
Robert Hudson



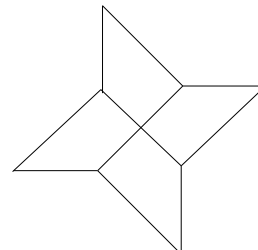
Begin by cutting an
8.5x11" sheet of
notebook paper in half.



Make 2 identical modules
Place one on top of other



Fold 4 corners in and
interlock at center.



Completed Throwing Star

To draw blood, insert
needles at 4 points and
toss at unsuspecting sibling